

EMPIC-Newsletter

1/05

Date
June 2005

Dear Reader,
what will a Civil Aviation Authority do in the future? Will **EASA** do all the work?



Obviously not. EASA will make the rules and will check CAAs, but in many areas it will be the responsibility of national CAAs to issue personal licences,

certificates and to perform company surveillances (audits) for example in the area of Part-145, Part-147, OPS, FTOs etc.

For this reason, our portfolio of configurable standard software components is useful and can support your daily work with a quality and functionality you have never seen before. - **Have a look at it!**

Best regards,

Jörg K. Kottenbrink

New Customer

Austro Control GmbH

(ACG), Civil Aviation Authority of Austria, has chosen EMPIC GmbH and the solutions **EMPIC® FCL 1,2** and **EMPIC® Part-66**. Austro Control was looking for a standard product that handles licences according to JAA/EASA regulations as well as to national laws.

ACG will use the **condition trees** within EMPIC® FCL 1,2 to configure the complex acquisition criteria (for initial, renewal, conversion etc.) for different licence categories and ratings. Our product will exchange data with LPLUS (theoretical examinations) and SAP R/3 (billing).

User Group Meeting

Users of our **FCL 3** solution in **Austria**, **Greece**, the **Netherlands** and **Switzerland** will come to Erlangen, Germany, at the end of June 2005 to share their experiences and to talk with EMPIC GmbH about development requirements for the next releases of the software.

EMPIC® Query Synthesizer

We offer a new **graphical tool** to create **flexible reports** without our permanent assistance needed. This tool is



designed for the **advanced end user** (see screen on the right).

You can select most fields of the whole database in *full accordance with the authorisation (rights) system*. The fields are used to display information or to restrict the search criteria. The user can create queries among the different modules of EMPIC® Suite. The queries can be stored and linked into application modules.

The end user can easily start a pre-defined query within his module and then fill in variable fields (such as date or licence type). The report is executed and delivers the results upon his confirmation. The user only gets results that are compliant with his authorisation within the EMPIC® Suite. The results can be shown as online listings, printed reports or transferred to MS-Excel.

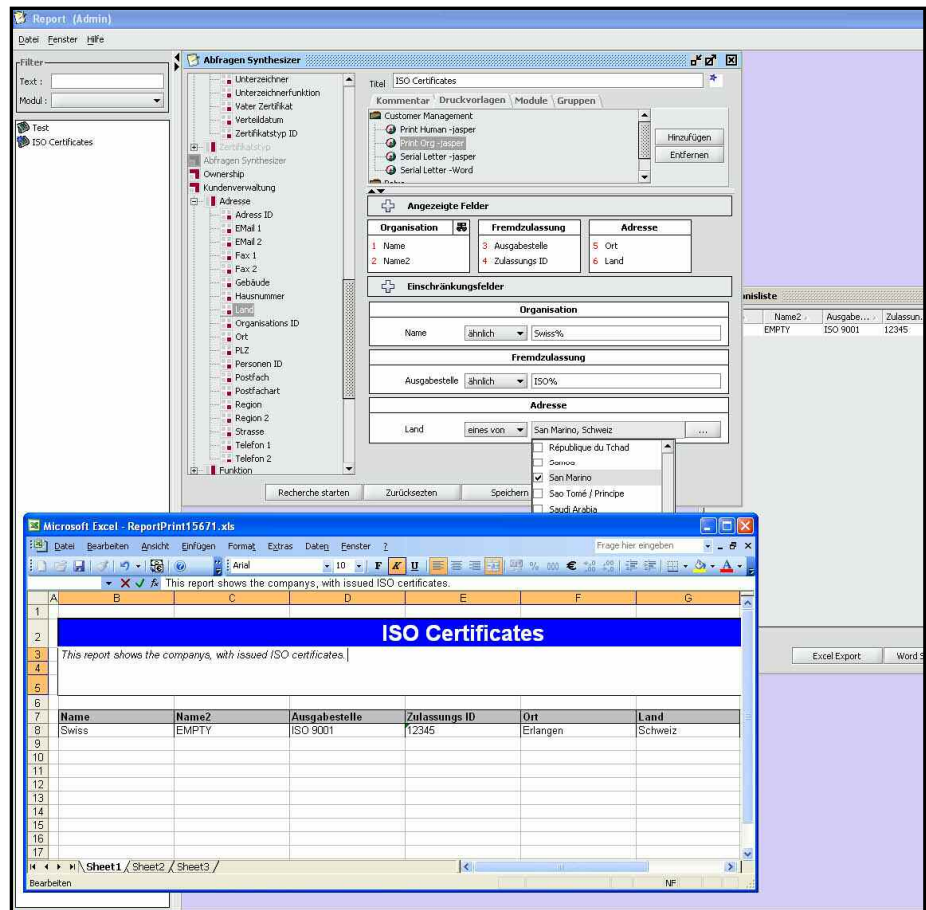
Printed and exported reports can be prepared and designed with templates. We see two areas of operation:

1. Definition of **frequently used reports** by our customer on his own
2. **Ad-hoc (management) queries**, composed by an advanced user of the customer

New features in EMPIC® FCL 3

The current version 2.7 has some useful add-ons, e.g.:

- Workflows and documents to handle **“temporarily unfit”** persons
- **Vacation substitute** for AMEs. AME can grant rights to read



“own” applicants to another AME up to a desired date

- AMS can move a specific ongoing examination to another AME
- AME/AMC can enter examinations up to 14 days later into the system
- Worklists show the status of a sub-examination (still open or already finished) performed by a specialist, also as a member of the system
- Global roles for easier rights administration of large AMCs

Company Surveillance

Customers have praised a **unique feature** we offer: a specialised application software for the management of all information and printouts in the area of JAR OPS, Part-145 (JAR-145), Part-147 (JAR-147) etc. **AND** a completely integrated audit management system. *Watch for further details in our next newsletter.*

EMPIC – Your Experts in JAA/EASA - IT Solutions